

# SD-WAN Solutions for Microsoft Office 365 and Azure



**X10 NETWORKS**  
YOUR NETWORK IS OUR BUSINESS

As enterprises utilize a growing number of cloud-based applications, it becomes difficult to maintain optimized higher speeds and connectivity with traditional WAN networks. MPLS (Scaling MultiProtocol Label Switching) as a solution is costly and time-consuming. SD-WAN has emerged as a cost-effective solution that can deliver agile and efficient results which were unimaginable with traditional WAN networks. Software-defined wide-area network (SD-WAN) is a service which enables the enterprise to dynamically connect branch offices and data centers on a global scale and optimize how data moves between branches, data centers, and the cloud. SD-WAN solutions have a very impressive track record lowering WAN costs, improving application performance, user satisfaction, and continuity. As an SD-WAN solution provider, X10 Networks also offers a consultancy service to define which features are important to your enterprise. This is essential in choosing the best SD-WAN solution for your business needs.

## Evolving Needs for WAN Network Architecture

Mission-critical SaaS applications (such as Office 365) are required to scale for high-performance because of the ever-increasing number of the users and devices in branches. Traditional methods, such as backhauling traffic to a centralized hub for network egress/breakout, have led to poor user experiences due to high latency and congested links. In addition, traditional network security inspection (by inline decryption) of traffic on complex SaaS protocols (Exchange and Sharepoint Online, Skype for Business/Microsoft Teams) have become inefficient due to unnecessary overhead and performance bottlenecks. This has caused availability, interoperability, and supportability issues.

## SD-WAN solutions for Office 365

In order to minimize latency caused by backhauling traffic through the data center and improve the user experience, enterprises can now enable direct Internet breakout of Office 365 applications from branches. This eliminates hair-pinning of key Office 365 traffic through remote cloud data centers, network security appliances, proxies, and secure web gateways. This also frees up various WAN links for other traffic. Microsoft's concept brings services as close to their customers' as possible by directing connections to the closest Microsoft "Front Door" of Office 365 services. These have been proven to have a significantly wider reach than the limited set of data centers where the data for a particular user is stored and replicated. Administrators don't need to send traffic through a secure web gateway since Microsoft provides Office 365 native security features to reduce the network security risk including Data Loss Prevention, Anti-Virus, Multi-Factor Authentication, Customer Lock Box, Advanced Threat Protection, Office 365 Threat Intelligence, Office 365 Secure Score, Exchange Online Protection, and Network DDOS prevention.

## Ease of Deployment

The SD-WAN Solutions X10 Networks offer make full use of Office 365 network optimization. Resulting in easy, pain-free deployment through a fully automated solution. This is accomplished using the REST API integration, automatic creation of necessary low-level DNS and data traffic-steering policies, NAT and firewall rules. A very simple, easy-to-use screen provides top-level configuration to enable Office 365 optimization with three connection options for the local breakout. This simple configuration and sophisticated backend functionality reduce the time it takes to get up and running.



### Contact Us

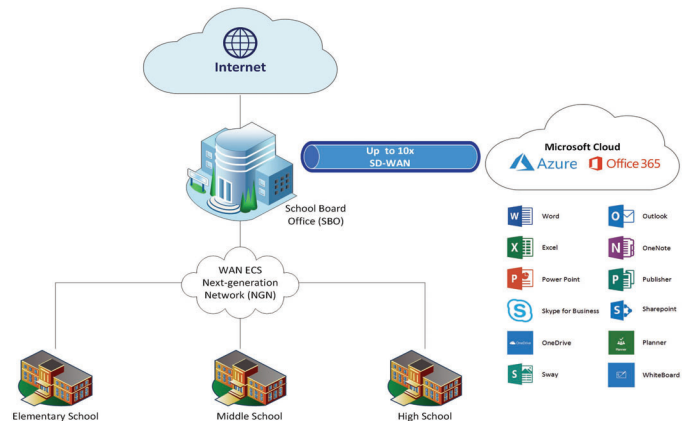
Address: 510-1199 West  
Pender Vancouver, BC, V6E 2R1  
Phone: 1-866-442-0565  
Email: info@x10networks.net  
Website: www.x10networks.com



VANCOUVER | CALGARY | TORONTO | MONTREAL  
SAN DIEGO | MANILA

## Improved User Experience

SD-WANs enable enterprises to manage various types of internet connections, including broadband, MPLS and 3G/4G/LTE with better provisioning tools to QoS specific traffic types. Rather than deploying scripts or commands to individual routers, identifying the issue and deploying a solution at a network level is much easier and faster when an error occurs in the network. SD-WAN optimization features allow administrators to shape bandwidth and define a hybrid network route for critical traffic through high-speed channels leaving slower connections for auxiliary traffic. The traffic priority of various applications can be evaluated as critical or non-essential, i.e., social media applications can be decreased. Office and Exam applications can be profiled as a high priority. All traffic can be optimized.



## Support for Azure Policies

Office 365 customers who also use Microsoft Azure can obtain Office 365 policy settings directly from Azure via Microsoft's REST API. SD-WAN leverages these policies from Azure to split the traffic locally, provide categorization to either optimize (for select URLs) or allow, and then egress to the nearest Office 365 "Front Door"

## Benefits of SD-WAN Solutions

- ✓ Improved application performance and quality of service for remote and branch workers.
- ✓ Reduced WAN costs and scaled capacity through the use of lower-priced broadband and mobile connections.
- ✓ Increased flexibility to prioritize business-critical applications over other network traffic.
- ✓ Improved business continuity and disaster recovery capabilities that maintain connectivity even during multiple network failures.
- ✓ Increased connection security across the WAN as applications and data migrate to the cloud.
- ✓ Reduced branch networking complexity by consolidating services into an integrated WAN edge appliance and centralizing management and policy definition.

## Partnership

X10 Networks partners with leading SD-WAN providers to ensure each customer network performs at optimum levels, while meeting business needs and delivering the best return on investment.